

KEY PLAN

- LEGEND**
- TREE PROTECTION ZONE
  - NO BUILD ZONE
  - TREE PROTECTION FENCE
  - TREE TO BE RETAINED
  - UNSURVEYED TREE
  - ✗ TREE TO BE REMOVED

**NOTES**

This plan has been prepared with information supplied by the project surveyor, architect, planner, landscape architect and engineer. The project engineer has been retained and signed off by the engineer of record as being accurate and complete with respect to existing and ultimate site conditions related to tree retention and protection matters.

**ARCHITECT:**  
ROSTICH HEMPHILL ARCHITECTS  
DATE: .....

**PLANNER:**  
DIAMOND HEAD CONSULTING LTD.  
DATE: .....

**ARBORIST:**  
DIAMOND HEAD CONSULTING LTD.  
DATE: .....

**ENGINEER:**  
ASSOCIATED ENGINEERING  
DATE: .....

**LANDSCAPE ARCHITECT:**  
PERRY & ASSOCIATES  
DATE: .....

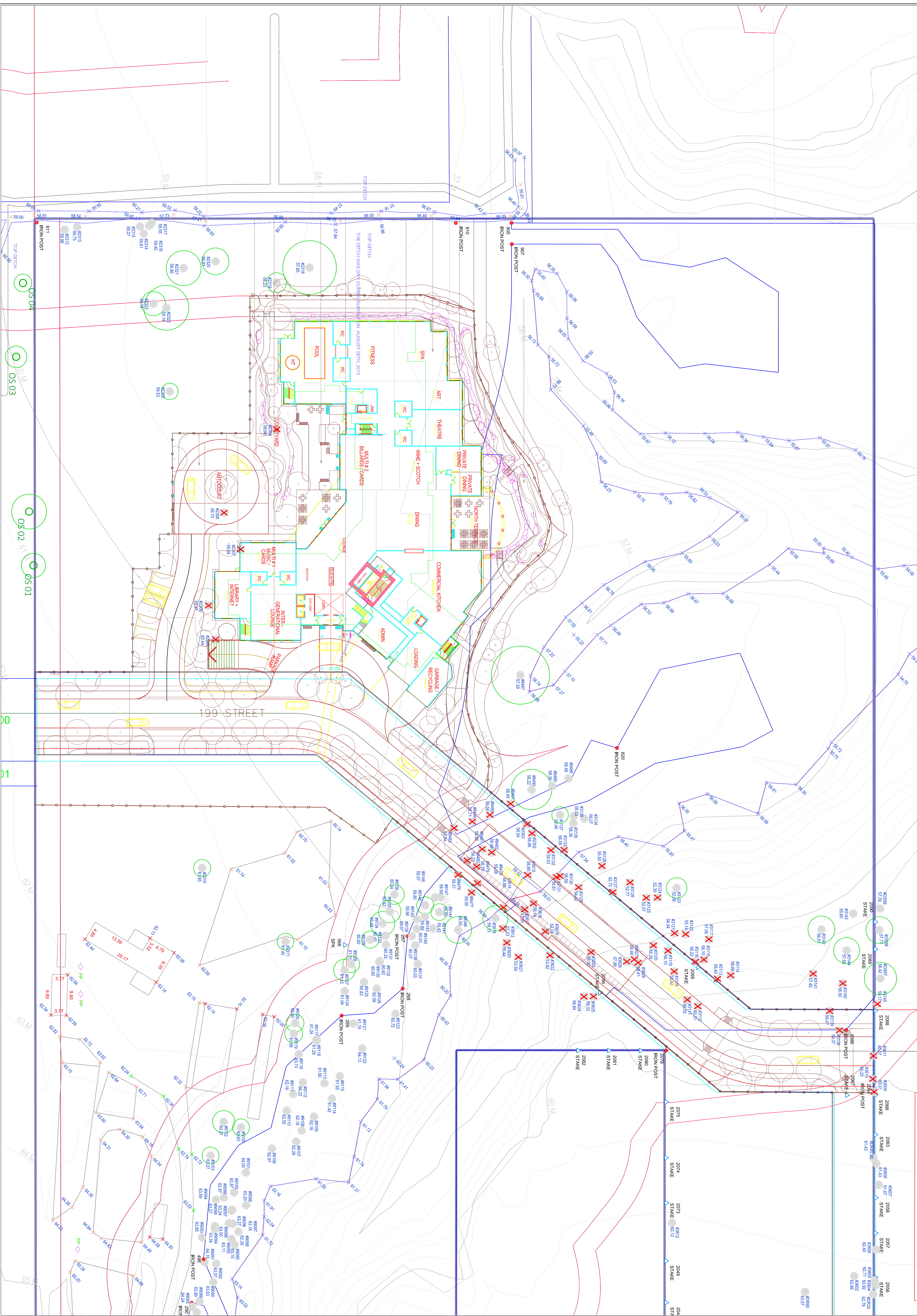
**SURVEYER:**  
BENNETT LAND SURVEYING LTD.  
DATE: .....

**SCALE**

0 30 m

Date: 2016/01/15  
Drawn by: KW  
Page Size: ARCH D  
(24"x36")

Page #  
1 of 1



3551 COMMERCIAL STREET  
VANCOUVER BC | V5N 4E8  
T 604.733.4886 | F 604.733.4879

Project: Integrated Site Design Concept  
Client: Care Pacific  
Address: 7742 & 7787 200th Street, Langley, BC  
Legal Description: L1 5, SEC 22, TWP 8, NWD, PL NWPA2407 PID 006-475-248 and SEC 22, TWP 8, NWD, PL NWP5922 PID 001-320-840